

Approved Modification designs for release tabs on Tandem Student Harness Lateral strap quick Ejectors

The purpose of this document is to bring together and illustrate the different types of approved designs, which can be installed as a modification on to any tandem student harness lateral strap, ejectors, for quick release purposes.

In 1994 a modification for a Tandem vector was approved, but the details of that design are not readily available (See Form 212).

In 2001 a modification was approved for general use on Tandem Vector Harness', and that design is replicated in this document (#1).

In 2004 two designs were approved for general use on Tandem Student Harness' (#2 and #3)

Further designs (#4, #5, #6) are included, which were accepted by the British Skydiving Riggers' Subcommittee in November 2025.

N.B: The construction of the modifications detailed in this form, must be manufactured by a British Skydiving qualified Parachute Rigger (PR).

Construction Drawings and methods:

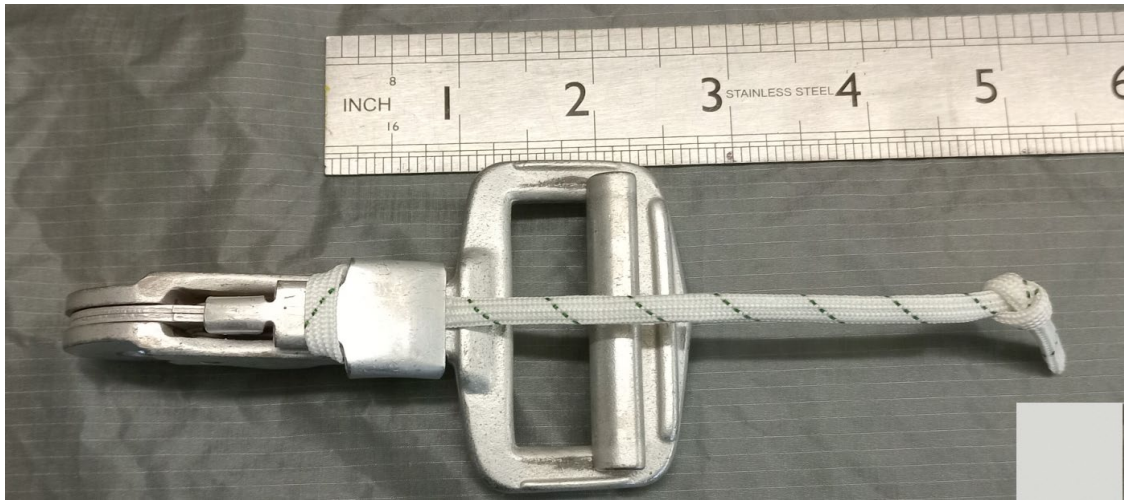
#1 Using a suitable (20") length of Type 3 binding tape, cut a small slit in the middle and work this onto the release clasp. Double back on itself and sew.



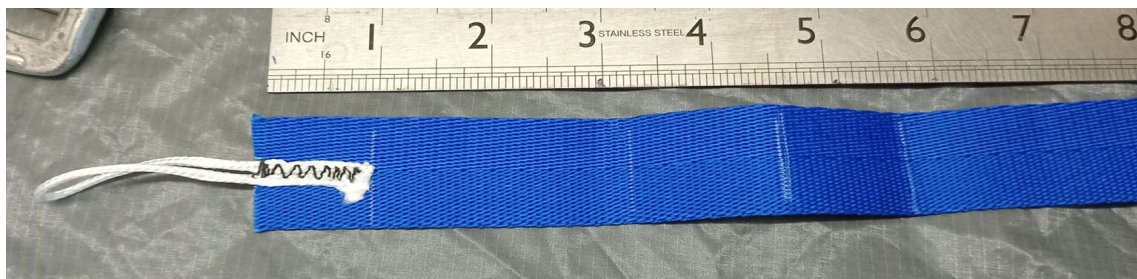
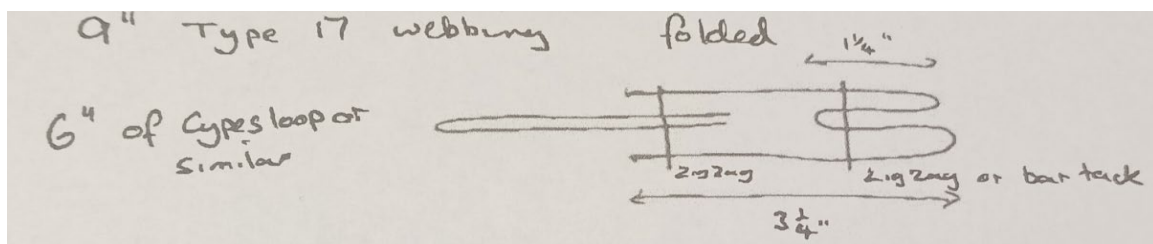
The excess is then sewn to give some grip to the user.



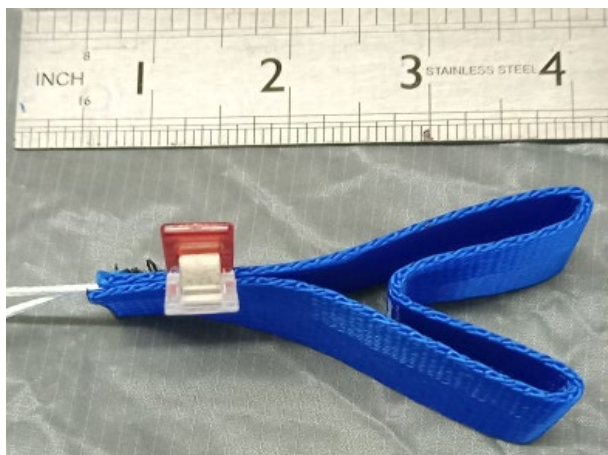
- #2** 15" of type 2a or gutted 550lb line, fingertrapped and knotted, end hot knifed.
Open loop to get over the wide part of the lift tab on the buckle, then close tight.



- #3** Based on Atom design
Sew 6" of cypress loop material, or similar, to 9" Type 17 webbing



Fold

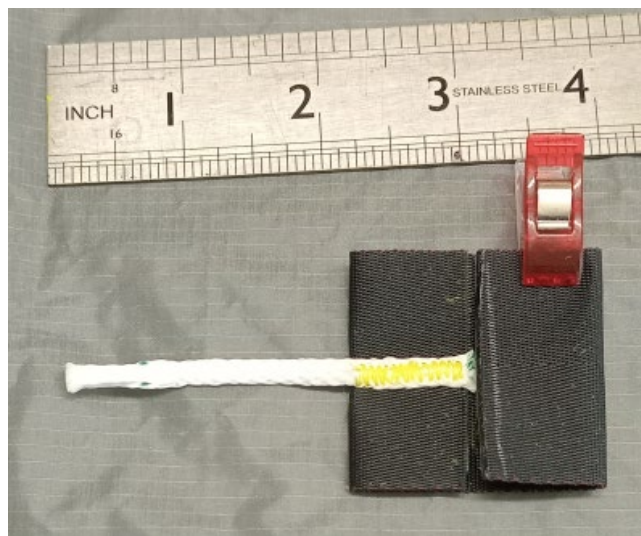


and zig zag or bartack.

- #4** Based on Next design
2" length of 1" Tubular with a dacron loop.



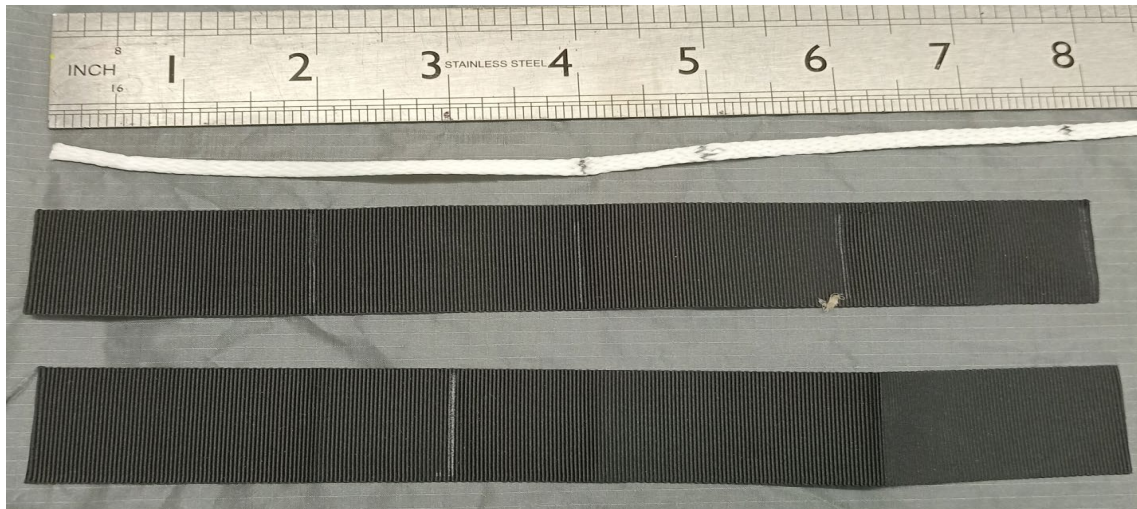
- #5** 6" Spectra finger trapped at 3½" and bartacked / zigzagged to 3½" type 12 folded in the centre.



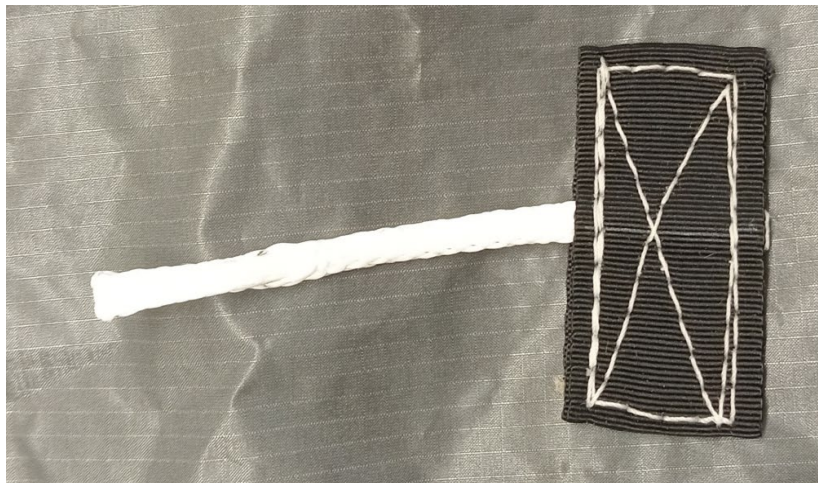
Type 12 folded over and 'flag' stiched, or two rows of bartacks.



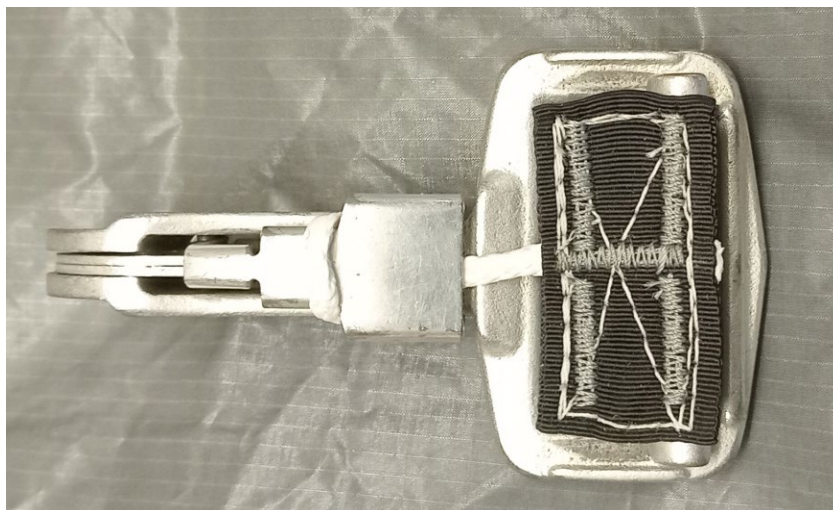
- #6** 8" of 1" type 3 binding tape, marked at 2", 4", 6"
turn over and mark at 3"
10" Spectra, marked at 4", 5", 8"



Fold the spectra at the 4" mark, finger trap from the 5" mark and then hotknife at the 8" mark.



Place Spectra in the middle of the Type 3 pack, aligned with the 3" mark
Secure with a box and cross pattern.



Add bartacks.